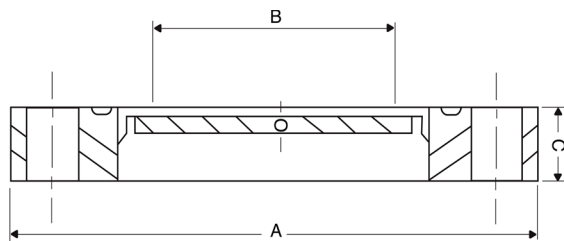


# Fused Silica Quartz Viewport

A zero length viewport has a thickness no larger than that of its mounting flange. It provides a wide angle viewing window for your vacuum chamber as there are no tubulation to restrict observation. Manufactured using high purity fused silica quartz.

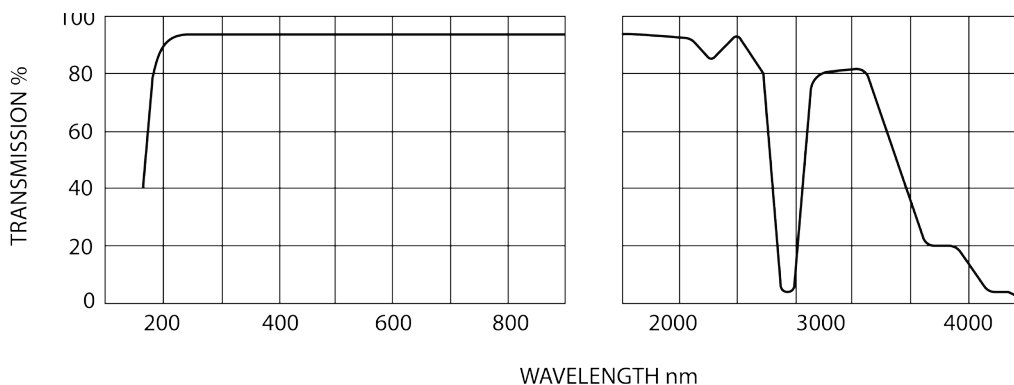


## Product Overview

- HV and UHV compatible
- Maximum Temperature 120°C
- Minimum Temperature minus 20°C
- Maximum Rate of Temperature Change 3°C per minute
- Leak Rate  $<1 \times 10^{-10}$  mbar ls<sup>-1</sup>
- Pressure Range 1 bar to  $1 \times 10^{-11}$  mbar

Fused silica viewports are offered in CF flange styles. The viewports comprise a high purity laser quality fused silica optic with precise flatness, parallelism, scratch and dig specifications. The ultra high vacuum (UHV) CF versions are offered using high grade 304L (or 316LN POA) stainless steel flanges.

## Transmission Curve



Fused Silica Quartz Viewports						
DN Type	OD A mm	Viewing Diameter B mm	C mm	O mm	Max Bake °C	Order Code
DN19	34	16	12.7	1.5	200	ZVPFSQ16
DN40	70	32	12.7	3	200	ZVPFSQ38
DN40	70	38	12.7	3	200	ZVPFSQ38W
DN63	114	63	17.4	4.5	200	ZVPFSQ64
DN100	152	89	19.9	6	200	ZVPFSQ100