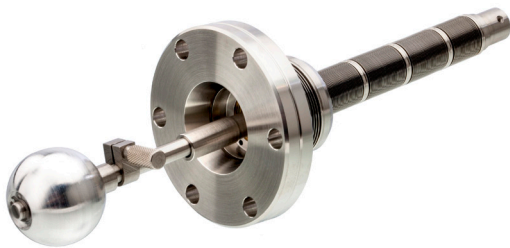




WS20 Conventional Wobble Sticks

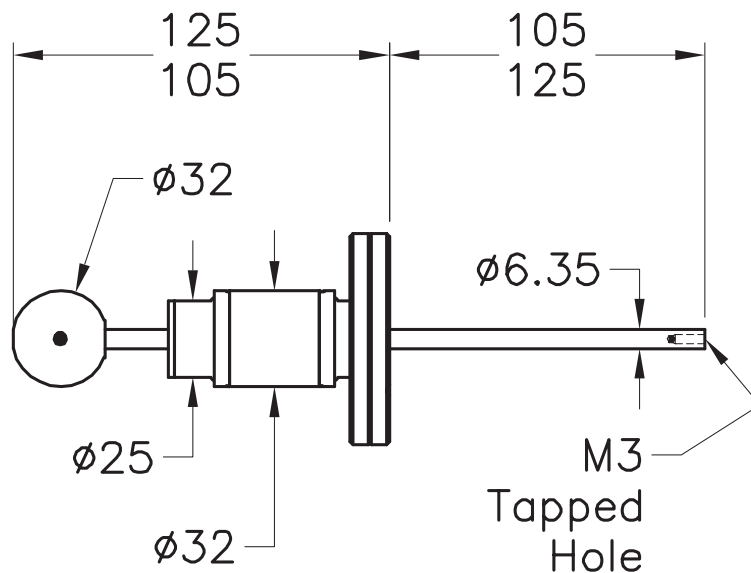
The WS20 wobble stick allows limited linear and angular movement. A cost efficient manually operated manipulator, translating linear hand movement into the vacuum envelope with 15° of angular movement.



Product Overview

- 20mm linear movement
- +/- 7.5° of angular movement
- Bakeable to 250°C
- 6.35mm dia shaft with M3 tapped hole
- All stainless steel construction
- leakrate 1×10^{-10} mbar ls⁻¹
- Pressure range 1 bar to 10⁻¹¹ mbar.

Tactile operation to give the user a true 'feeling' of position inside the vacuum chamber.



Conventional Wobble Stick - WS20

DN Type	Flange OD mm	Linear Travel mm	Angular range Degrees	Air Side Retracted mm	Air Side Extended mm	Vcauum Side Retracted mm	Vcauum Side Extended mm	Order Code
DN40	70	20	±7.5	125	105	105	125	ZWS020