

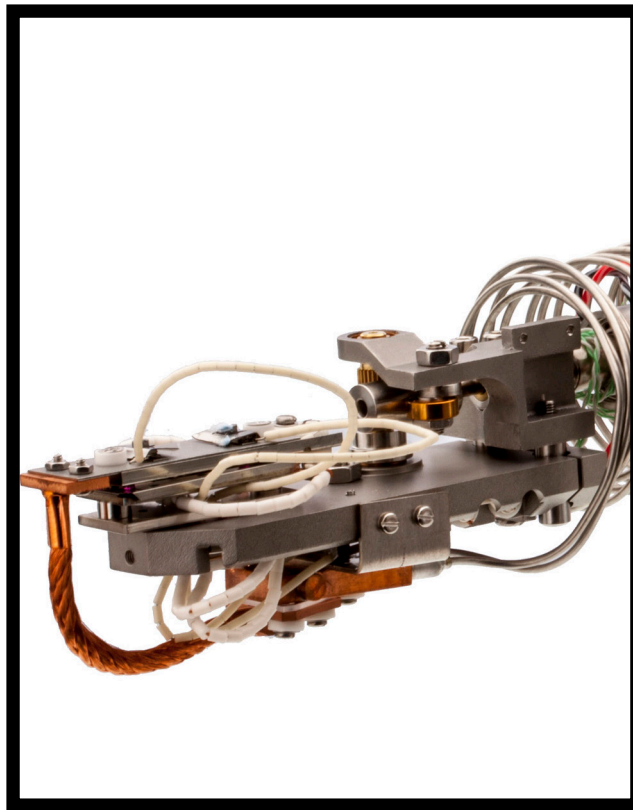


VACGEN

Assembly Guide

Manipulation Cooling AS0023

VGS03-02T23



Copyright Notice 2002 by VACGEN. All rights reserved. Information contained in this handbook is subject to change without notice and does not represent a commitment on the part of VACGEN. No part of this document may be copied or distributed, transmitted, transcribed, stored in a retrieval system or translated into any human or computer language, in any form or by any means, electronic, mechanical, magnetic, optical, manual or otherwise or disclosed to third parties without the express written permission of VACGEN LTD, Unit A, Swallow Business Park, Diamond Drive, Lower Dicker, Hailsham, East Sussex, BN27 4EL, UK.

Helping you make the next leap forward

www.vacgen.com



DISCLAIMER

This Assembly Guide should be used in conjunction with the owner's manual where available, and is intended as a guide only as there may be variations between versions and therefore must be used at the Owner's Risk. For more detailed assistance, please contact our Support desk +44 (0) 1323 379 335 or support@vacgen.com.

HEALTH AND SAFETY

All repairs and services should be carried out by a qualified engineer, using the correct tools and procedures to carry out the repair. VACGEN are not liable for any errors within the assembly guides which may cause inconsistencies during repair.

The Goods, especially chemicals, may be dangerous if not properly used or stored and the appropriate precautions taken. The Customer accordingly agrees that it shall take all such steps as are reasonably practicable or usual to eliminate or reduce any risk to health and/or safety to which use of the Goods may give rise and acknowledges that where the Goods are manufactured to a design supplied by the Customer, the Company will not undertake any research as to the risks to health and/or safety which may arise from use or storage of the Goods. Where the Goods are manufactured to a design supplied by the Customer, the Customer shall comply with all the duties which may be implied at law on a designer and/or manufacturer of the Goods.

Revision	Date	Comment	Initials
1			
2			
3			

Unit A, Swallow Business Park
Diamond Drive, Lower Dicker
Hailsham, East Sussex
BN27 4EL, UK



Fitting Cooling

HPT

1. Looking from the front of the manipulator, remove the rear right hand mini flange.
2. Insert & fix the Down Pipe Assy (Item 1) using a ZCU19 gasket.
3. Between thumb and forefinger, bend pipes 90° to suit the path the connecting coil pipes will follow. This must be done in one action, so make sure of the alignment before bending.

Transax

4. With the drive removed
5. Looking from the front remove the left-hand feedthrough chamber flange
6. Remove the lower bearing support (sample end) that the drive passed through
7. Fit gasket onto the cooling pipes (ZCU19)
8. Thread the cooling pipe through the port and down the support tube, forming the tube as you go
9. Fit the bearing support and cooling support.

ALL

10. Position and fit the cooling coil onto the sample holder, via the mounting bracket.
11. Connect the couplings using two new gaskets (Item 18 - Part code ZLNCU).
12. Tighten finger tight, then a ¼ turn, take great care as to not twist/bend the tubing.
13. With the cooling mounted and connected to the down pipes.
14. Mount the Arrow Head Rope Assy (Item 3) to the cooling box, placing the Sapphire Plate in-between the cooling box and arrow mount.
15. Use the 3 Top Hat Ceramics (XCEB04) between the screw head (M2) and Arrow Head, this will give you complete electrical isolation.
16. Cooling rope will need to be cut to length, do this by fixing the post (item 16) or Rope Socket (See drawings) to the Heater, and gauge the length required. It may be better to start too long and cut back using a very sharp wire cutters.

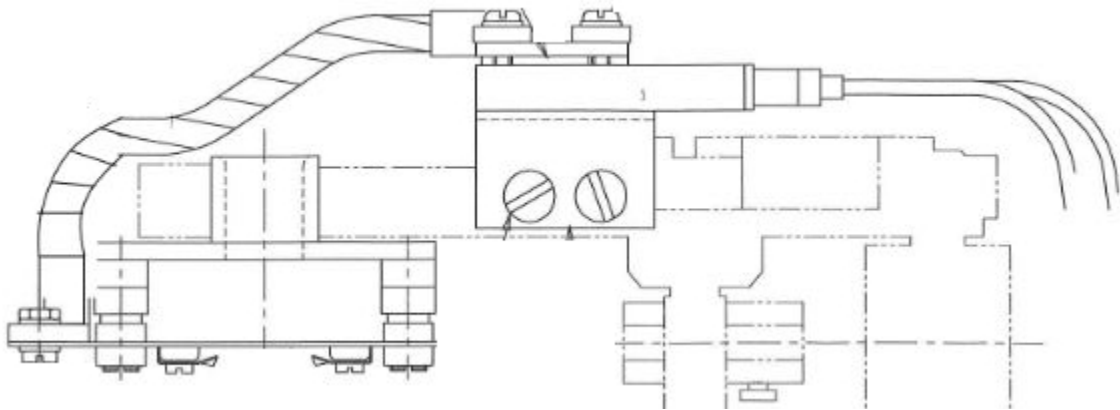
Important Note: Make sure that the rope is not too tight as it will restricts the rotation on the SH2.

17. Crimp the Rope in place, making sure that the orientation of the end is correct and does not need to be twisted to attach to the plate.



DRAWINGS

Use standard Terminal Crimpers for the rope connections, use the red section



New version with socket copper rope holder (No mounting post)

