



VACGEN

Assembly Guide

MLRV/MLRM Tube Replacement

AS0033

VGS03-02T33



Copyright Notice 2002 by VACGEN. All rights reserved. Information contained in this handbook is subject to change without notice and does not represent a commitment on the part of VACGEN. No part of this document may be copied or distributed, transmitted, transcribed, stored in a retrieval system or translated into any human or computer language, in any form or by any means, electronic, mechanical, magnetic, optical, manual or otherwise or disclosed to third parties without the express written permission of VACGEN LTD, Unit A, Swallow Business Park, Diamond Drive, Lower Dicker, Hailsham, East Sussex, BN27 4EL, UK.

Helping you make the next leap forward

www.vacgen.com



DISCLAIMER

This Assembly Guide should be used in conjunction with the owner's manual where available, and is intended as a guide only as there may be variations between versions and therefore must be used at the Owner's Risk. For more detailed assistance, please contact our Support desk +44 (0) 1323 379 335 or support@vacgen.com.

HEALTH AND SAFETY

All repairs and services should be carried out by a qualified engineer, using the correct tools and procedures to carry out the repair. VACGEN are not liable for any errors within the assembly guides which may cause inconsistencies during repair.

The Goods, especially chemicals, may be dangerous if not properly used or stored and the appropriate precautions taken. The Customer accordingly agrees that it shall take all such steps as are reasonably practicable or usual to eliminate or reduce any risk to health and/or safety to which use of the Goods may give rise and acknowledges that where the Goods are manufactured to a design supplied by the Customer, the Company will not undertake any research as to the risks to health and/or safety which may arise from use or storage of the Goods. Where the Goods are manufactured to a design supplied by the Customer, the Customer shall comply with all the duties which may be implied at law on a designer and/or manufacturer of the Goods.

Revision	Date	Comment	Initials
1			
2			
3			

Unit A, Swallow Business Park
Diamond Drive, Lower Dicker
Hailsham, East Sussex
BN27 4EL, UK



MLRV/MLRM Tube Replacement

Please Note:

MLRM (Obsolete) These have a Steel Core.

MLRV These have a housing with magnets

1. Remove the outer Magnet Housing.
2. Looking at the knife edge you will see the spiral clip.
Find the tail end of the clip and peel out using a small flat blade.
3. Pull out the Inner Shaft.
4. The Front Bearing will out with the Inner Shaft.
5. Remove the Rear Bearing Assembly from the Inner Shaft by removing the cap head screw.
6. If changing the Inner Tube, either remove the steel core (MLRM now obsolete) or magnet housing (MLRV).
7. Check both Bearing Assemblies for any damage.
Note: If running just rough, then washing the bearings in Isopropanol can often solve this issue.
8. If the Inner Tube is being replaced, check the Front Bearing is not tight and runs on the shaft smoothly prior to fitting.
9. Refit Rear Bearing/Magnet Assembly.
10. Slide the Inner Tube into Outer Tube.
11. Refit Front Bearing into recess.
12. Refit Clip.
13. Check operation without magnet fitted.
It is easier to feel any imperfections in the tube.
14. Refit magnet housing and try movement.



Please note the following:

Once the inner shaft has been removed, try the bearing on the inner shaft for any rough movement or sticking.

Do not use any lubricant on the bearings, these have been through a special lubrication process.

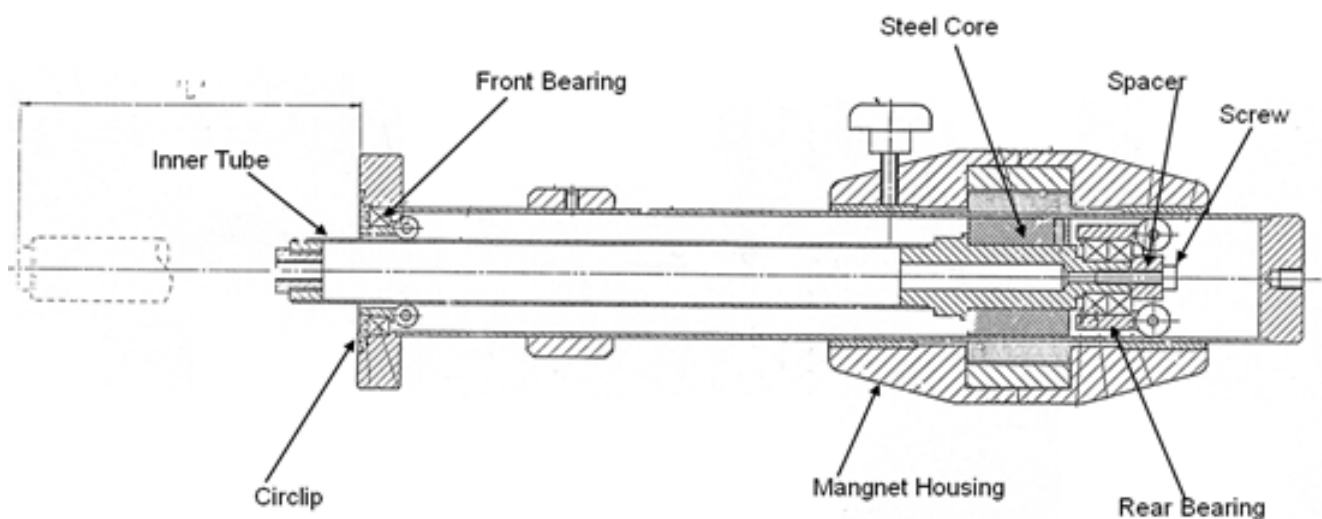
Spares:

2 Series Front/Rear Bearing Assembly MLRMBRK

4 Series Front/Rear Bearing Assembly MLRMBRK4

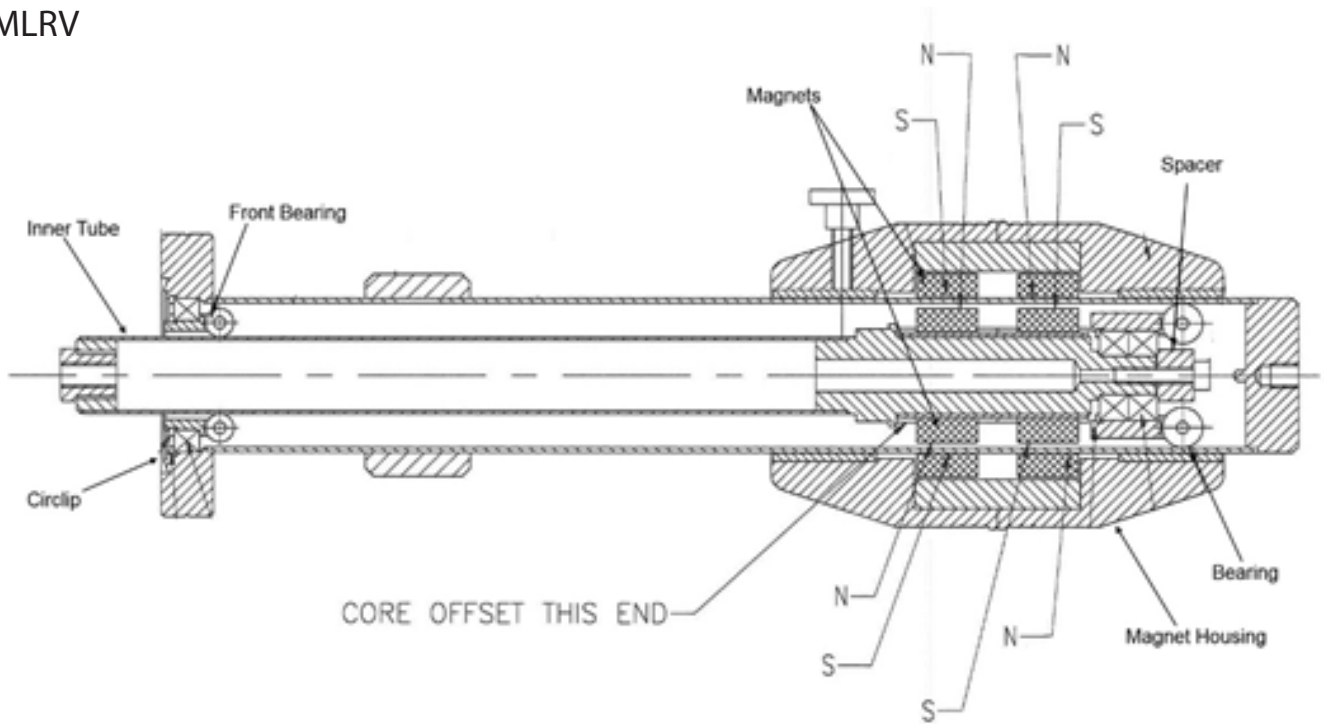
Guide to internal setup:

MLRM





MLRV



Please note only the bearing sets and outer tube are interchangeable between the MLRM (Obsolete) and the MLRV.