



LDS Screw Drives

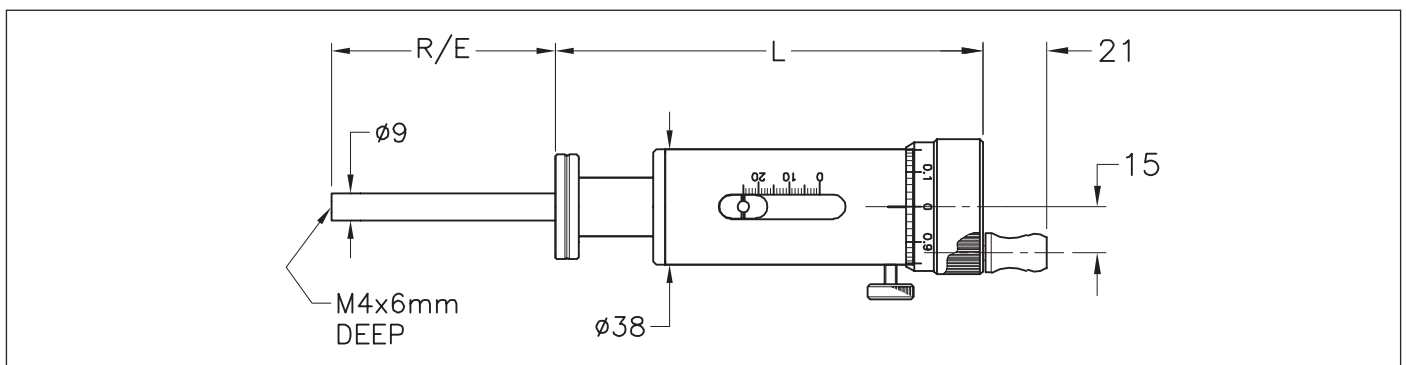
These linear drives can be used in applications where sample or internal device movement is required with incremental displacement. Manually or motorised operation drives enabling in vacuum positive linear travel.



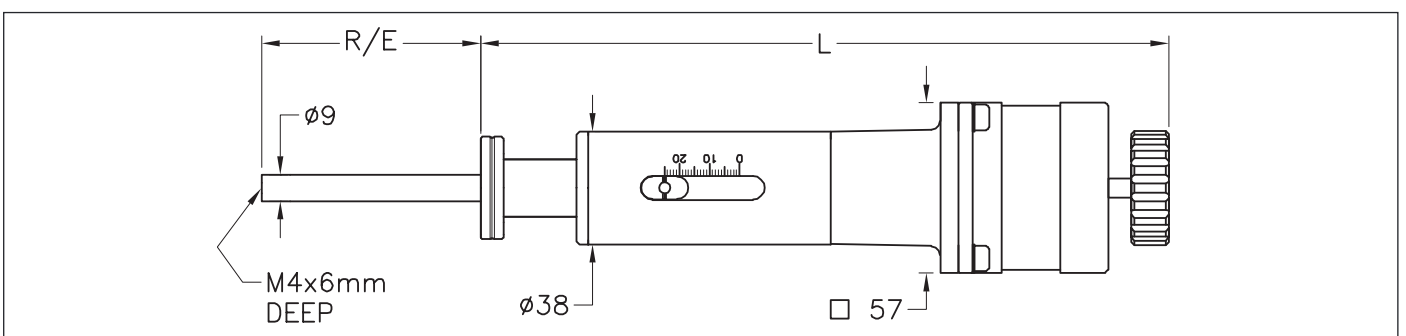
Product Overview

- Linear non-rotating probe
- 34mm OD conflat flange with 9mm shaft
- 70mm OD conflat version with 33mm travelling mount
- Resolution of 0.02 mm
- Manual hand wheel or motorised actuator
- Position lock (manual)
- Manual versions bakeable to 250°C standard
- Stepper motor driven versions available
- Motorised versions bakeable to 230°C with motor removed
- Microswitch upgrade kits are available for the stepper motor drive options

LDS 900 Manual (34mm)



LDS 900 Stepper motor (34mm)





LDS Screw Drives

LDS Series Screw Drives on 34 mm OD Flange

DN Type	Flange OD mm	Travel mm	Actuation	Scale mm	Dim L mm	Dim R mm	Dim E mm	Order Code
DN16	34	25	Manual	0.02	139	90	116	ZLDS925
DN16	34	50	Manual	0.02	172	90	141	ZLDS950
DN16	34	100	Manual	0.02	240	90	192	ZLDS910
DN16	34	150	Manual	0.02	307	90	242	ZLDS915
DN16	34	25	Stepper Motor	None	234	90	116	ZLDS925W
DN16	34	50	Stepper Motor	None	267	90	141	ZLDS950W
DN16	34	100	Stepper Motor	None	334	90	192	ZLDS910W
DN16	34	150	Stepper Motor	None	399	90	242	ZLDS915W
DN16	34	25	Stepper Motor with encoder	None	234	90	116	ZLDS925E
DN16	34	50	Stepper Motor with encoder	None	267	90	141	ZLDS950E
DN16	34	100	Stepper Motor with encoder	None	334	90	192	ZLDS910E
DN16	34	150	Stepper Motor with encoder	None	399	90	242	ZLDS915E
DN16	34	25	Stepper Motor with limits	None	234	90	116	ZLD925MM
DN16	34	50	Stepper Motor with limits	None	267	90	141	ZLD950MM
DN16	34	100	Stepper Motor with limits	None	334	90	192	ZLD910MM
DN16	34	150	Stepper Motor with limits	None	399	90	242	ZLD915MM

Prices quoted are Ex-works, VACGEN Limited, UK

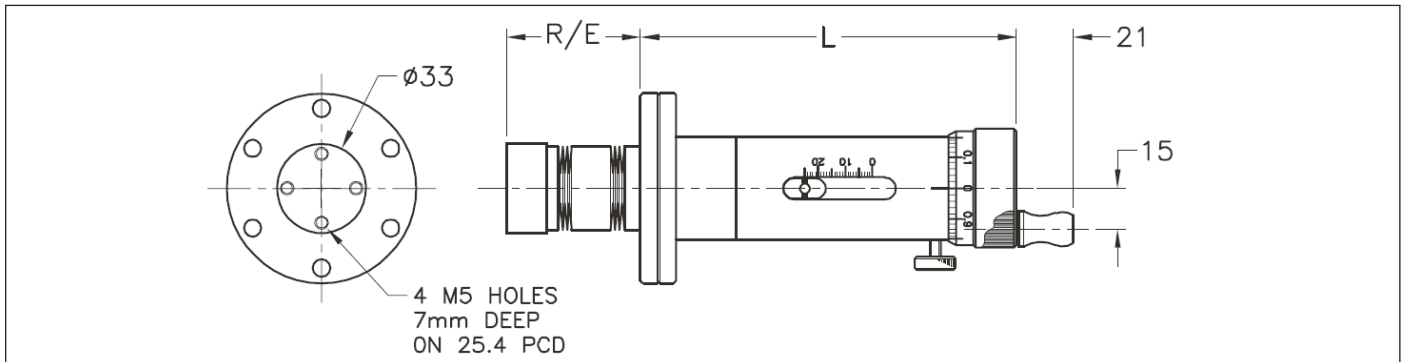
Prices do not include shipment or local import duty costs.

VACGEN reserve the right to change prices without prior notice..

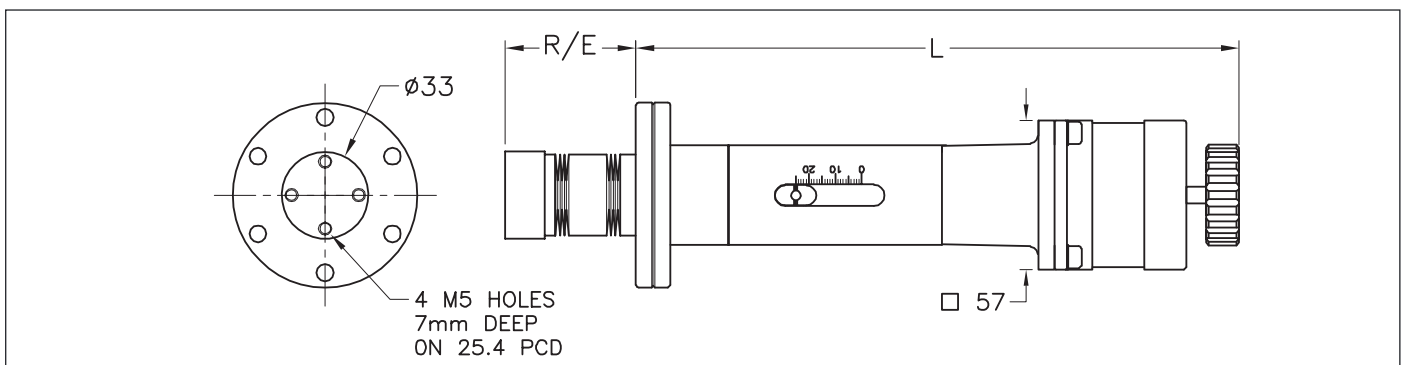


LDS Screw Drives

LDS 200 Manual (70mm)



LDS 200 Stepper Motor Drive (70mm)



LDS2 Series Screw Drives on 70 mm OD Flange

DN Type	Flange OD mm	Travel mm	Actuation	Scale mm	Dim L mm	Dim R mm	Dim E mm	Order Code
DN40	70	25	Manual	0.02	139	33	58	ZLDS225
DN40	70	50	Manual	0.02	172	41	92	ZLDS250
DN40	70	100	Manual	0.02	240	58	160	ZLDS210
DN40	70	150	Manual	0.02	307	74	226	ZLDS215
DN40	70	25	Stepper Motor	0.02	307	74	226	ZLDS225W
DN40	70	50	Stepper Motor	None	234	33	58	ZLDS250W
DN40	70	100	Stepper Motor	None	334	58	160	ZLDS210W
DN40	70	150	Stepper Motor	None	399	74	226	ZLDS215W
DN40	70	25	Stepper Motor with encoder	0.02	307	74	226	ZLDS250E
DN40	70	50	Stepper Motor with encoder	None	234	33	58	ZLDS225E
DN40	70	100	Stepper Motor with encoder	None	334	58	160	ZLDS210E
DN40	70	150	Stepper Motor with encoder	None	399	74	226	ZLDS215E
DN40	70	25	Stepper Motor with limits	0.02	307	74	226	ZLD250MM
DN40	70	50	Stepper Motor with limits	None	234	33	58	ZLD225MM
DN40	70	100	Stepper Motor with limits	None	334	58	160	ZLD210MM
DN40	70	150	Stepper Motor with limits	None	399	74	226	ZLD215MM



LDS Screw Drives

LDS Microswitch Upgrade Kits	
LDS Drive	Order Code
ZLDS925M	ZLD925RM
ZLDS950M	ZLD950RM
ZLDS910M	ZLD910RM
ZLDS915M	ZLD915RM
ZLDS225M	ZLD225RM
ZLDS250M	ZLD250RM
ZLDS210M	ZLD210RM
ZLDS215M	ZLD215RM