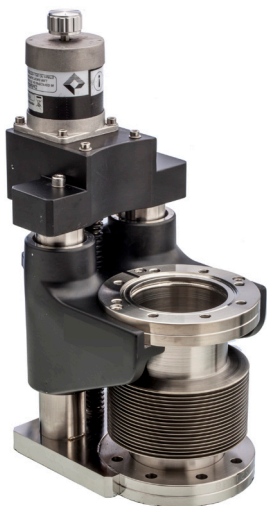




LTM Wide Bore Series

A Z-Axis, bellows sealed, transfer mechanism with 68mm clear bore. High accuracy and stable, edge welded bellows, Z-Axis transfer mechanism, with actuation options: manual or motor driven providing controlled motion. Can be mounted in any orientation.



Product Overview

- High precision and accuracy
- 68mm clear bore edge welded bellows
- Range of travel 25 to 150mm
- Smooth operating
- Graduated scale in 1mm increments
- Operating temperature range -20°C to +200°C
- Fully bakeable to 250°C with motor removed
- Top flange is M8 tapped, lower flange is clear bore.
- Positive stops at extremes of movement
- Motorised available with optional encoders
- Limit switches supplied as standard with stepper motor options
- Operating pressure 1 bar to 10⁻¹¹ mbar
- Leak rate 1x10⁻¹⁰ mbar ls⁻¹

LTM Wide Bore Series Z-Axis Manipulators

DN Type	Flange OD mm	Travel mm	Operation	A Extended mm	A Compressed mm	Overall Height mm	Bake temp	Order Code
DN63	14 Tapped	25	Manual	125	100	253	250°C	ZLTM11425HW
DN63	14 Tapped	50	Manual	150	100	278	250°C	ZLTM11450HW
DN63	14 Tapped	75	Manual	175	100	303	250°C	ZLTM11475HW
DN63	14 Tapped	100	Manual	200	100	328	250°C	ZLTM114100HW
DN63	14 Tapped	150	Manual	250	100	375	250°C	ZLTM114150HW
DN63	14 Tapped	25	Stepper motor	125	100	307	250°C*	ZLTM11425SMS
DN63	14 Tapped	50	Stepper motor	150	100	332	250°C*	ZLTM11450SMS
DN63	14 Tapped	75	Stepper motor	175	100	357	250°C*	ZLTM11475SMS
DN63	14 Tapped	100	Stepper motor	200	100	382	250°C*	ZLTM114100SMS
DN63	14 Tapped	150	Stepper motor	250	100	432	250°C*	ZLTM114150SMS
DN63	14 Tapped	25	Stepper with encoder	63	100	307	250°C*	ZLTM11425SMSE
DN63	14 Tapped	50	Stepper with encoder	92	100	332	250°C*	ZLTM11450SMSE
DN63	14 Tapped	75	Stepper with encoder	125	100	357	250°C*	ZLTM11475SMSE
DN63	14 Tapped	100	Stepper with encoder	163	100	382	250°C*	ZLTM114100SMSE
DN63	14 Tapped	150	Stepper with encoder	215	100	432	250°C*	ZLTM114150SMSE
DN63	14 Tapped	25	DC motor with PSU	63	100	407	250°C*	ZLTM11425DCS
DN63	14 Tapped	50	DC motor with PSU	92	100	432	250°C*	ZLTM11450DCS
DN63	14 Tapped	75	DC motor with PSU	125	100	457	250°C*	ZLTM11475DCS
DN63	14 Tapped	100	DC motor with PSU	163	100	482	250°C*	ZLTM114100DCS
DN63	14 Tapped	150	DC motor with PSU	215	100	532	250°C*	ZLTM114150DCS

*With motor and encoder removed