



MLRD Dual Axis Linear Transfer Probes

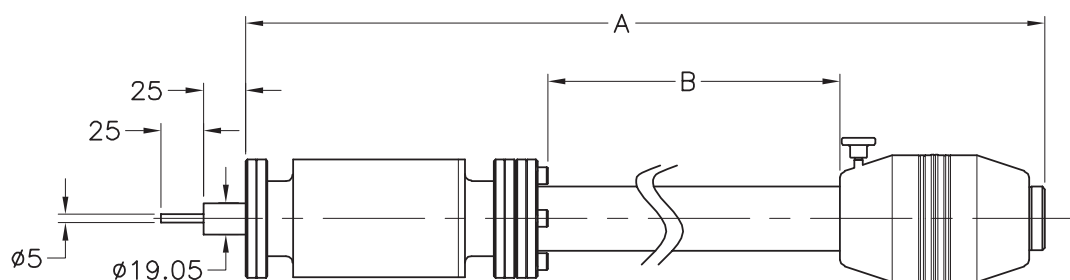
The MLRD range of dual axis/shaft sample transfer probes offer separate linear and rotary motions.



Product Overview

- Magnetically coupled dual linear and rotary motion shafts
- Linear shaft 19mm dia
- Rotating shaft 5mm dia, continuous rotation possible
- High powered magnets allow drives to be horizontally or vertically mounted
- Tactile control of sample transfer
- Bakeable internal and external magnets
- Complete drive bakeable to +250°C (max operating temp 120°C)
- Leak rate $< 1 \times 10^{-10}$ mbar ls⁻¹
- Pressure range 1 bar to 10^{-11} mbar
- Position lock
- 70mm OD conflat mounting flange
- 305mm to 914mm travel

The MLRD device has an independent shaft for the rotary motion and this, together with the bearing arrangement, gives precise, concentric, 360° continuous rotation of the secondary shaft.



Magnetic Linear Transfer Probes - MLRD Series

DN Type OD mm	Flange OD mm	Linear Travel mm	Dim A mm	Dim B mm	Load Capacity kg	Order Code
DN40	70	305	626	311	0.3	ZMLRD203
DN40	70	460	781	486	0.3	ZMLRD204
DN40	70	610	931	636	0.3	ZMLRD206
DN40	70	914	1324	940	0.3	ZMLRD209



MLRD Dual Axis Linear Transfer Probes

Magnetic Drive Guide Bars		
MLRM Part Code	MLRV Part Code	Order Code
ZLMRM203	ZLMRV203	ZMLRRG03
ZLMRM204	ZLMRV204	ZMLRRG04
ZLMRM206	ZLMRV206	ZMLRRG06
ZLMRM209	ZLMRV209	ZMLRRG09
ZLMRM406	ZLMRV406	ZMLRRG06
ZLMRM409	ZLMRV409	ZMLRRG09
ZLMRM412	ZLMRV412	ZMLRRG12
ZLMRM414	ZLMRV414	ZMLRRG14
All	Extension Handle	ZMLRMEH1
All	Extension Handle	ZMLRMEH2

MLRD Accessories		
MLRD Order Code	Description	Order Code
ZMLRD203	Extension Handle	ZMLRMEH1
ZMLRD204	Extension Handle	ZMLRMEH1
ZMLRD206	Extension Handle	ZMLRMEH1
ZMLRD209	Extension Handle	ZMLRMEH1
ZMLRD203	Guide Bar	ZMLRRG03
ZMLRD204	Guide Bar	ZMLRRG04
ZMLRD206	Guide Bar	ZMLRRG06
ZMLRD209	Guide Bar	ZMLRRG09