



VACGEN

Assembly Guide RP100 Seal Replacement AS0003

VGS03-02T03



Copyright Notice 2002 by VACGEN. All rights reserved. Information contained in this handbook is subject to change without notice and does not represent a commitment on the part of VACGEN. No part of this document may be copied or distributed, transmitted, transcribed, stored in a retrieval system or translated into any human or computer language, in any form or by any means, electronic, mechanical, magnetic, optical, manual or otherwise or disclosed to third parties without the express written permission of VACGEN LTD, Unit A, Swallow Business Park, Diamond Drive, Lower Dicker, Hailsham, East Sussex, BN27 4EL, UK.

Helping you make the next leap forward

www.vacgen.com



DISCLAIMER

This Assembly Guide should be used in conjunction with the owner's manual where available, and is intended as a guide only as there may be variations between versions and therefore must be used at the Owner's Risk. For more detailed assistance, please contact our Support desk +44 (0) 1323 379 335 or support@vacgen.com.

HEALTH AND SAFETY

All repairs and services should be carried out by a qualified engineer, using the correct tools and procedures to carry out the repair. VACGEN are not liable for any errors within the assembly guides which may cause inconsistencies during repair.

The Goods, especially chemicals, may be dangerous if not properly used or stored and the appropriate precautions taken. The Customer accordingly agrees that it shall take all such steps as are reasonably practicable or usual to eliminate or reduce any risk to health and/or safety to which use of the Goods may give rise and acknowledges that where the Goods are manufactured to a design supplied by the Customer, the Company will not undertake any research as to the risks to health and/or safety which may arise from use or storage of the Goods. Where the Goods are manufactured to a design supplied by the Customer, the Customer shall comply with all the duties which may be implied at law on a designer and/or manufacturer of the Goods.



RP100 Seal Replacement

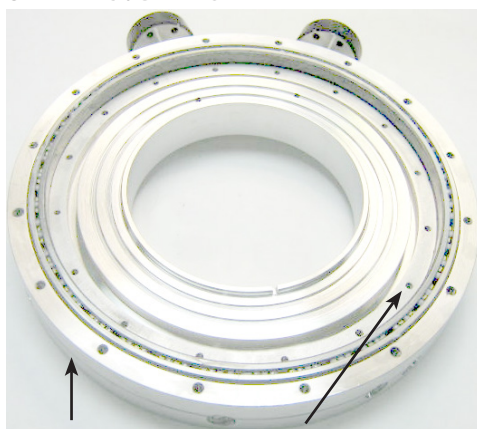
1. Remove the RP100 from system
2. If fitted, remove the handwheel / motor assembly, this is held on to the body via two cap head screws.
3. Remove Index Dial (3)
4. Remove the Bearing Clamp Ring (1)
5. Lift off Rotating Flange (6) this may be tight.
6. Remove seals and spacers
7. Clean out with Isopropanol
8. Wipe over new seals with isopropanol to remove loose surface
9. Fit seals and spacers
10. Fit Rotating Flange and clamp ring.
11. When fully assembled, the turning torque should be between 8Nm & 18Nm.
12. If possible, test on a leak checker with the interspaces pumped

BEARING



BEARING

CLAMP RING & BEARING



BASE FLANGE

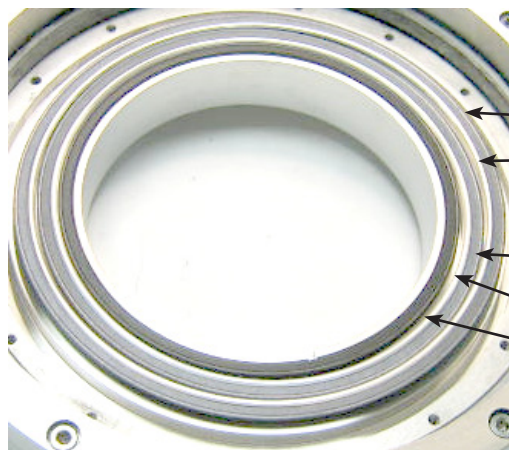
ROTATING CLAMP RING

BASE FLANGE ASSEMBLY



CLAMP RING

SEALS & SPACERS



SEAL LARGE XSMS08

SEAL SPACER

SEAL MEDIUM XSMS09

SEAL SPACER

SEAL SMALL XSMS10

MAIN BEARING ASSEMBLY

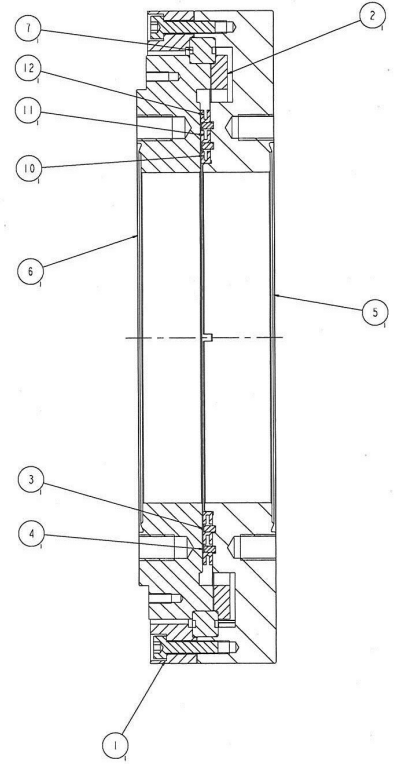
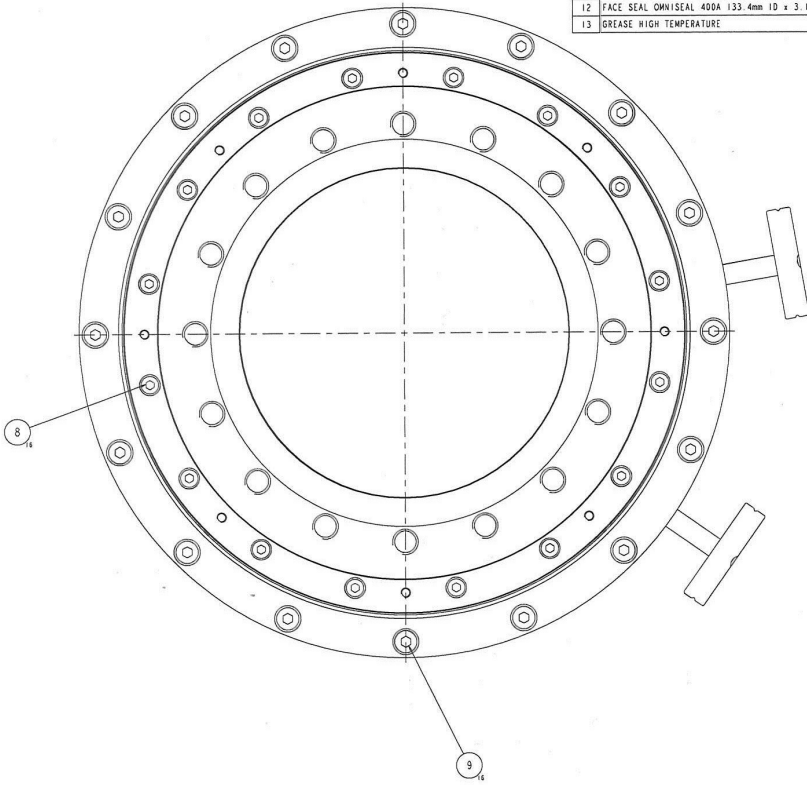


ROTATING FLANGE

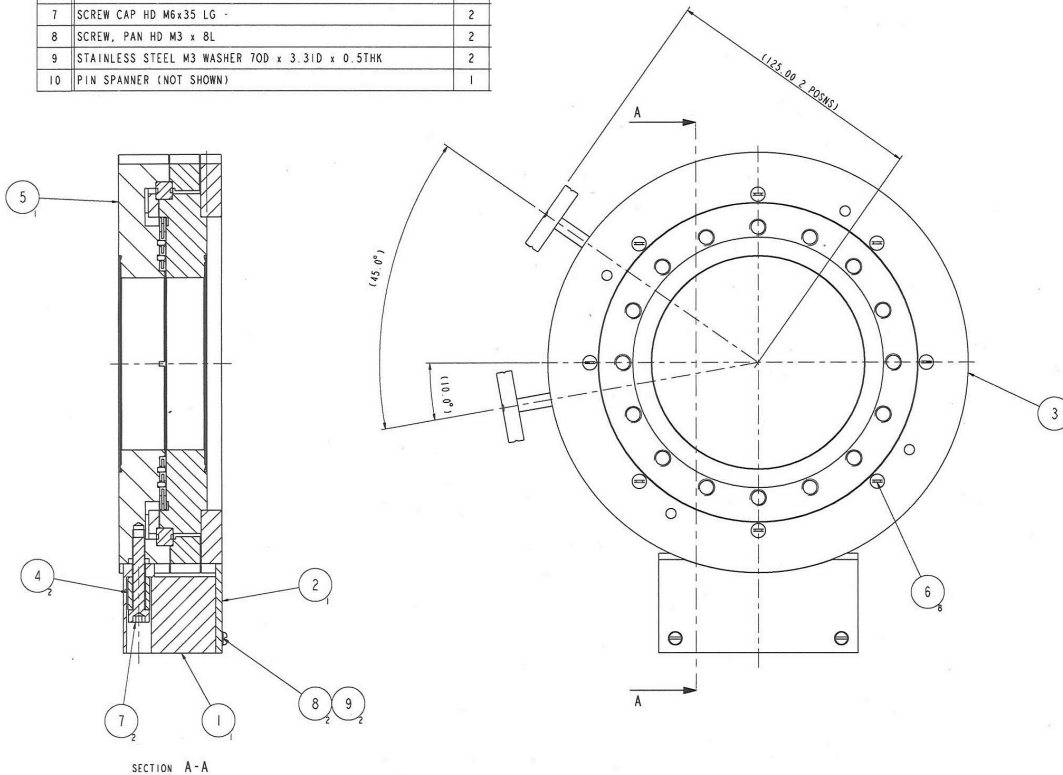


DRAWINGS

ITEM	DESCRIPTION	QTY	REMARKS
1	BEARING CLAMP RING BASE FLANGE	1	
2	BEARING CLAMP RING ROTATING FLANGE	1	
3	SEAL SPACER A	1	
4	SEAL SPACER B	1	
5	BASE FLANGE ASSEMBLY	1	
6	ROTATING FLANGE	1	
7	BEARING 4 POINT CONTACT 170 x 154 X B	1	
8	M3 CAP HEAD SCREW 20 LONG	16	
9	SCREW, CAP HEAD, M4 x 16 ST. STEEL	16	
10	FACE SEAL OMNISEAL 400A 108mm 10 x 3.1mm SECTION	1	
11	FACE SEAL OMNISEAL 400A 120.7mm 10 x 3.1mm SECTION	1	
12	FACE SEAL OMNISEAL 400A 133.4mm 10 x 3.1mm SECTION	1	
13	GREASE HIGH TEMPERATURE	2g	

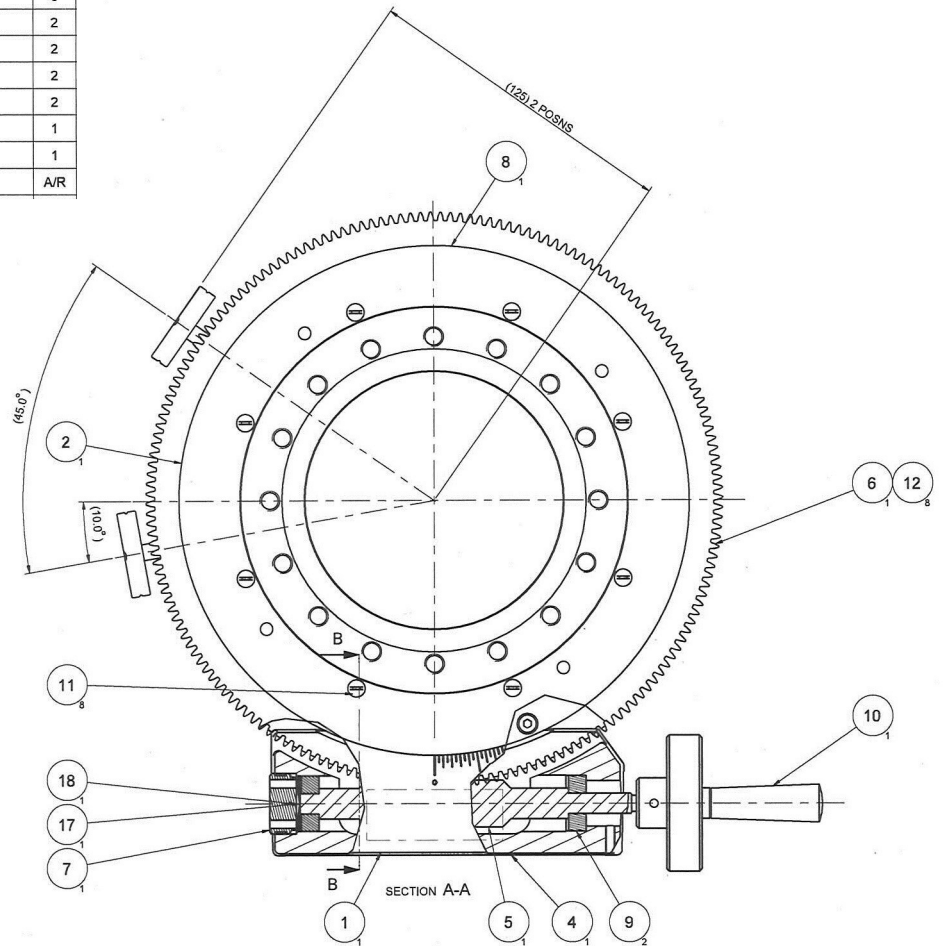
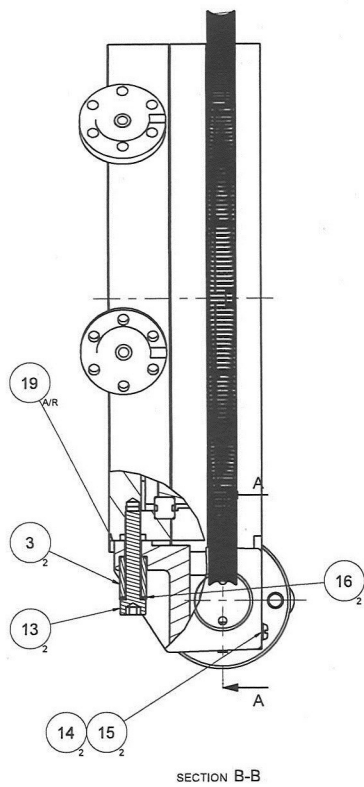


ITEM	DESCRIPTION	QTY
1	VERNIER MOUNTING BLOCK	1
2	VERNIER INDICATOR	1
3	INDICATOR DIAL	1
4	BUSH	2
5	MAIN BEARING ASSY RP100	1
6	SCREW, CSK M3 X 16	8
7	SCREW CAP HD M6x35 LG -	2
8	SCREW, PAN HD M3 x 8L	2
9	STAINLESS STEEL M3 WASHER 70D x 3.31D x 0.5THK	2
10	PIN SPANNER (NOT SHOWN)	1





ITEM	DESCRIPTION	QTY
1	VERNIER INDICATOR	1
2	INDICATOR DIAL	1
3	BUSH	2
4	WORM HOUSING	1
5	WORM GEAR	1
6	WORM WHEEL	1
7	BEARING PRELOAD NUT	1
8	MAIN BEARING ASSY RP100	1
9	BEARING, RADIAL 22 OD x 8 ID x 7 THK LUB 05:1A	2
10	HANDWHEEL ASSEMBLY	1
11	SCREW, CSK M3 X 16	8
12	M3 CAP HEAD SCREW 12 LONG	8
13	SCREW CAP HD M6x35 LG -	2
14	SCREW, PAN HD M3 x 8L	2
15	STAINLESS STEEL M3 WASHER 7OD x 3.3ID x 0.5THK	2
16	STAINLESS STEEL M6 WASHER 10.5OD x 6.5ID x 1THK	2
17	WASHER SPECIAL ST.STL 12 OD x 8.05 ID x 0.61 THK	1
18	BEARING PRELOAD WASHER	1
19	RP100 SHIM	A/R



Revision	Date	Comment	Initials
1			
2			
3			

Unit A, Swallow Business Park
 Diamond Drive, Lower Dicker
 Hailsham, East Sussex
 BN27 4EL, UK